



FB MONTANA
FARM BUREAU
FOUNDATION
Investing in the Future of Montana Agriculture

2025 Impact Report

The Montana Farm Bureau Foundation envisions a future where agriculture is thriving in Montana, where younger people are attracted to our farms and ranches, urban and rural residents understand and support agriculture, and where our farm and ranch communities are healthy and vibrant.

Dear Friends of the Montana Farm Bureau Foundation,

As President of the Montana Farm Bureau Foundation, I am proud to share our 2025 Impact Report and reflect on another year of meaningful investment in Montana agriculture, our rural communities, and our youth.



Montana Farm Bureau Foundation is supported by Farm Bureau members who are farmers, ranchers, agricultural professionals, and neighbors who call rural Montana home. Agriculture is not just our livelihood; it is our way of life. Because of your generosity, we are able to strengthen that way of life by supporting education, leadership development, and community growth across our state.

In 2025, your support allowed us to make significant investments in Montana's future. We distributed more than \$10,000 in scholarships and agricultural education materials, helping students pursue higher education and expand learning opportunities in classrooms. We invested over \$41,000 in leadership development, supporting conferences, training programs, and professional growth for young farmers and ranchers. Through community grants totaling more than \$10,000, we strengthened local projects and classrooms, and we provided nearly \$25,000 to youth agriculture and career and technical education organizations, including FFA, 4-H, and SkillsUSA.

The stories and photos in this report represent more than numbers—they reflect real people, real communities, and real impact. Students pursuing higher education, classrooms discovering agriculture for the first time, and young leaders stepping forward all remind us why this work matters.

On behalf of the Foundation Board of Directors, thank you for believing in our mission and for standing with Montana agriculture. Your support allows us to expand understanding, inspire leadership, and invest in the next generation who will carry our agricultural heritage forward.

With gratitude,

Cyndi Johnson, Montana Farm Bureau Foundation President



"Serving on the Montana Farm Bureau Foundation board is an enjoyable experience as I serve with a great group of board members who all have the same goal in serving - to help expand the reach and understanding of agriculture in our state with an emphasis on youth projects."

-Kris Descheemaeker, Board Member

Montana Farm Bureau Foundation Board of Directors

★ Cyndi Johnson, President
Conrad

★ Ed Bandel
Great Falls

★ Tim Gill
Helena

★ Kris Descheemaeker
Lewistown

★ Hans McPherson
Stevensville

★ Scott Stoner
Montana City

★ Casey Mott
Miles City

★ Lew Zimmer
Bozeman

★ Sky Anderson
Clyde Park

★ Darcia Patten
Broadus

★ Patti Davis, Encampment, WY

Who We Are



We are farmers, ranchers, ag professionals, and **your neighbors**. Rural **Montana** is our **home** and our **family**. It's a **community** of hard-working Montanans who **care deeply** about their responsibility to provide **healthy food** and quality products.

Farming and Ranching isn't just a business for us, it's a way of life.



\$10,000

in Scholarships & Ag Ed Materials



\$41,000

invested in Leadership Development



\$10,675

in Community Grants



SkillsUSA



\$24,650

Support to youth Agriculture Organizations

Every year, the Montana Farm Bureau Foundation raises the bar by **investing more** in our programs, **boosting** donations, **awarding more** in scholarships, and **increasing** grant funds.



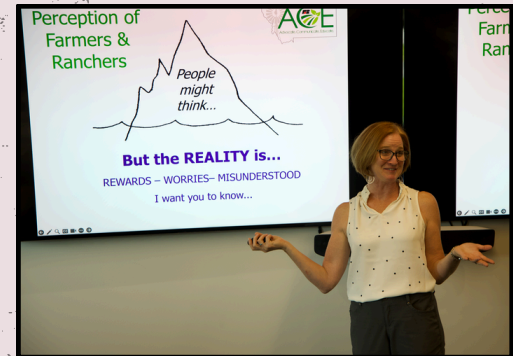
Montana State FFA Officers at the State Officer Candidate Conference which trains high school seniors on interview skills, sponsored by MFBFo.



Families visiting the Montana State Fair made seed mosaics with Montana grown crops and learned about how they become food on the table in the Ag Building.



1st graders at Cascade Elementary received a mini-grant to purchase an indoor hydroponics grow system for their classroom. The equipment will be used annually!



Members of the MFBF ACE (Advocate, Communicate, Educate.) Program work with incredible presenters like Karen McNenny who talks about community & leadership.



Impacts at a Glance



MFB Foundation Board Members enjoy judging the youth speech contest and hearing their take on current agriculture topics and their future goals.



MFBF members, Lauren Kett and Jacob Stenberg saddled up to raise funds for the Foundation at the Summer Conference.



Board Member, Kris Descheemaeker teaches youth about helmet safety and ATVs at the Fergus County Farm Fair.

Scholarships & Ag Education



Hattie Bumgarner
Belt, MT

"I am so grateful to have received the Collegiate Young Farmers & Ranchers Scholarship. I am a Junior at MSU and pursuing a Masters in Accounting with the hopes of taking those skills back to the agricultural communities in Montana. Scholarships like these are the reason I'm able to pursue that goal!"



Every "Supporting Montana Agriculture" license plate contributes to our programs!

Supporting Youth in Agriculture



The MFB Foundation provided ice cream coupons for youth 4-H exhibitors at the 2025 Montana State Fair.



The MFB Foundation donated over \$5,000 in ag accurate books, worksheets, activities and promotional materials to classrooms, libraries and community youth programs.



Over \$1,000 was awarded to the top five winners in our Youth Speech Contest.



Program Highlights

Leadership & Rural Development



MFB Foundation gives \$5,000 to the MFBF Annual Convention for educational speakers like Dr. Marissa Hake, DVM.



Over \$15,000 was donated to the State and National Young Farmer & Rancher Leadership Conferences and attendees.



Attendees at the Young Farmer & Rancher Leadership Conference heard from cattle working expert, Curt Pate with a hands-on demonstration.

Supporting
Montana agriculture
through **education,**
research,
and **community support,**
with a special emphasis
for the **development of our**
youth.

mfbf.org/foundation



The seminars I've attended through REAL MT have been incredible! It has been amazing to be able to interact with leaders from the Natural Resource Industries like mining, energy, timber, farming and ranching. The seminars are educational and focus on the challenges that each industry is facing and how we can work together toward a solution. This would not have been feasible without the role the MFB Foundation plays in helping make this program possible for its members!

Tosha Johnson, REAL MT Class VI member



FB MONTANA
FARM BUREAU
FOUNDATION
Investing in the Future of Montana Agriculture

100 Red Mountain Drive, Suite 101
Bozeman, MT 59718

2024-2025 DONORS

Gold Level \$1,000+

Browning Kimball Foundation
Seed Source, Inc., Tom Helm & Alieda Stone
FBL Financial Group
Ed & Kayla Bandel
Zimmer Family Fund
Jim & Marilyn Dusenberry
BNSF Railway
Energy Transfer
Mountain West Farm Bureau MIC
Dennis & Kris Descheemaeker
JM & Amanda Peck
Northwest Counties Farm Bureau
John & Gina Stevens

Disaster Relief Fund

Casey & Rebecca Mott
Virgil Henke
Rodney & Mary Obermiller

Memorial Donations

Janet Krob Memorial

Carl Krob Family
Diana Bailey
Victoria Baungard
Lora Lee Bauer
John & Debe Youngberg
Lew Zimmer & Lynne Jermunson
Scott & Casey Kulbeck
Steve & Dorothy Krob
Montana Farm Bureau Federation
Casey & Rebecca Mott
Duane Schieck
Scott & Denise Seilstad
Gwynn Simeniuk
Liv Stavick
Tyler & Rikki Swant
Lew Zimmer & Lynne Jermunson

Group Memorial for

Janet Krob, Dave McClure & Pat McNulty
John & Gina Stevens

Silver Level \$100-\$999

Judy Barrett
Dorothy Hlad-Larson
Patti Davis
Tim & Carol Gill
Capra Ranch, LLC
Johnston Livestock, LLC
Dudley & Karen Hartmann
Virgil & Judy Henke, Toklat Enterprises
Diana Bailey
Stan & Audrey Olson, Hobson Farm Co.
Bank of the Rockies
Montana Ag Safety Program
Western Ag Network
Lewis & Clark Co. Farm Bureau
Redline Sports
Dana & Jeremiah Jansen
Ward & Darcia Patten, Equine Align
Jim Geesey
Sky Anderson & Monica Switzer
Jacob and Lainey Stenberg
Scott & Casey Kulbeck
Ben & Cassie Raffety
Walt Anseth
Jess & Nikki Bandel
Scott & Louise Stoner
Klayton Lohr
AgWest Farm Credit
Fergus County Farm Bureau
Edward Jones
Lund Law
Park Co. Farm Bureau
Meagher Co. Farm Bureau
Don & DelRae Steinbeisser
Jules & Bonnie Marchesseault

Thank you to our donors who have helped us grow!



Donate Today!

mfbf.org/foundation or mail contributions to:
Montana Farm Bureau Foundation
100 Red Mountain Drive, Suite 101
Bozeman, MT 59718

MFBFo is a qualified 501 (c)(3) making all gifts tax deductible!